

The original pdf copy of this past question was typed, scanned, compiled & packaged

by:



In case of next buy or you want to buy other past questions, contact us directly

on:

Website/Blog:



www.stcharlesedu.com

Facebook Page:



[stcharlesedu](https://www.facebook.com/stcharlesedu)

Whatsapp:



2348051311885

Answer **all** the questions.

Each question is followed by four options lettered **A to D**. Find the correct option for **each** question and **shade in pencil** on your answer sheet, the answer space which bears the same letter as the option you have chosen.

Give only **one** answer to **each** question. An example is given below. -

The computer's physical parts attached to the system unit are called

- A. hardware units.
- B. input units.
- C. output units.
- D. peripheral units.

The correct answer is peripheral units, which is lettered D, and therefore answer space D would be shaded.

[A] [B] [C] [D]

Think carefully before you shade the answer spaces; erase completely any answer(s) you wish to change.

Do **all** rough work on this question paper.

Now answer the following questions.

1. Which of the following data is alpha-numeric?
 - A. 568
 - B. SS3
 - C. 10.00
 - D. Twenty-five
2. The process of converting data into information is known as data
 - A. analysis.
 - B. collection.
 - C. processing.
 - D. collation.
3. The BCD equivalent of **135** is
 - A. 111101.
 - B. 001011101.
 - C. 100110101.
 - D. 000100110101.
4. Which of the following is an example of information?
 - A. Student's score in a test
 - B. Recorded observations
 - C. List of items
 - D. Average score of students in a test

Want More WASSCE Past Questions

Get the complete or Updated WASSCE Past Questions Paper (Objective and Essay) in PDF or Ms-Word from Us

WHATSAPP +2348051311885

5. The technology used for the **first** generation of computers was
 - A. vacuum tubes.
 - B. integrated circuit.
 - C. transistors.
 - D. microprocessors.

6. The **main** distinguishing feature of **fifth** generation computers is
 - A. liberal use of microprocessor
 - B. artificial intelligence
 - C. extremely low cost.
 - D. versatility.

7. The first attempt at using the *punch card principle* to do mathematical calculations led to the invention of
 - A. Napier's bone.
 - B. Abacus.
 - C. Charles Babbage Difference Engine.
 - D. Charles Babbage Analytical Engine.

8. An opening on the motherboard of a system unit where expansion cards can be inserted is known as
 - A. extension board
 - B. extension box.
 - C. expansion port.
 - D. expansion slot.

9. One kilobyte is equivalent to
 - A. 1024 bits.
 - B. 1024 bytes.
 - C. 2* bits.
 - D. 2* bytes.

10. An input device that converts an image into a text is known as
 - A. optical character reader.
 - B. scanner.
 - C. optical mark reader.
 - D. barcode reader.

11. The unit of the computer system that directs and supervises other units is called the
 - A. accumulator.
 - B. arithmetic logic unit.
 - C. control unit
 - D. memory unit.

12. Input devices are computer devices that can
 - A. be used to get data from the computer memory.
 - B. send data and instructions into the computer memory.
 - C. receive data and instructions from the computer memory.
 - D. send results to the memory of the computer.

Want More WASSCE Past Questions

Get the complete or Updated WASSCE Past Questions Paper (Objective and Essay) in PDF or Ms-Word from Us [WHATSAPP +2348051311885](https://www.whatsapp.com/channel/00291111111111111111)

13. The central processing unit consists of
- A. input output and processing.
 - B. control unit primary storage and secondary storage.
 - C. control unit arithmetic logic unit and primary storage.
 - D. control unit processing and primary storage.
14. A *wait state of zero* in hardware means the
- A. processor speed is higher than that of memory.
 - B. processor speed is slower than that of the memory.
 - C. memory' is faster than the processor in terms of speed.
 - D. processor and the memory are equally matched in speed.
15. The set of instructions used to solve specific user tasks is called
- A. application software.
 - B. editor.
 - C. system software.
 - D. utility software.
16. Which of the following commands can be used to switch between open windows?
- A. Alt + F4
 - B. Alt + Tab
 - C. Ctrl + D
 - D. Ctrl + F
17. The command used to seek for assistance in Microsoft disk operating system is
- A. Helper.
 - B. /?
 - C. Attrib.
 - D. /S.
18. The software responsible for allocating and managing system resources is called
- A. driver.
 - B. operating system.
 - C. translator.
 - D. utility software.
19. The *LET* statement in *QBASIC*
- A. allows users to assign a value to a variable.
 - B. checks the errors within the code.
 - C. allows the users to enter data into the computer from "outside" the program.
 - D. allows the users to enter data into the computer during program execution.
20. Datatypes in *QBASIC* programming language include the following **except**
- A. double.
 - B. float.
 - C. long.
 - D. short

Want More WASSCE Past Questions

Get the complete or Updated WASSCE Past Questions Paper (Objective and Essay) in PDF or Ms-Word from Us

WHATSAPP +2348051311885

21. A good algorithm **must** be
- concise and finite.
 - consistent and continuous.
 - detailed and verbose.
 - sequential and lengthy.
22. The command used for adding comments in *QBASIC* programming is
- CLS.
 - INPUT.
 - REM
 - PRINT
23. Which of the following *QBASIC* arithmetic operations is the last in order of precedence?
- Addition
 - Division
 - Exponentiation
 - Subtraction



Figure 1

24. The part labelled **Y** in the compiler interface in **Figure 1** indicates
- intermediate code.
 - input code.
 - object code.
 - stored code.
25. A program that converts source code instructions in high-level programming language to object codes line by line is known as
- assembler.
 - compiler.
 - interpreter.
 - editor.
26. The process of transferring a file from a server to a computer is called
- downloading.
 - uploading.
 - browsing.
 - pinging.

Want More WASSCE Past Questions

Get the complete or Updated WASSCE Past Questions Paper (Objective and Essay) in PDF or Ms-Word from Us

WHATSAPP +2348051311885

PAPER 2
ESSAY

Answer **three** questions only
All questions carry **equal** marks

1. The home network of a family has Internet access. A server is configured to control user access to the network
- (a) (i) State **two** problems that will **likely** happen if the children in the family have uncontrolled access to the Internet. [2 marks]
- (ii) Suggest how the problems in **1(a)(i)** can be prevented [2 marks]
- (b) Give **one** reason for the user control access. [1 marks]
- (c) To have access to the network, **each** user logs in with a username and password. The flowchart in **Figure I** illustrates the authentication process required to log in. *Use the information below to complete the flowchart by placing the letters **A to E** in the appropriate flowchart symbol numbered (i) to (v)*
- A** - "Please, enter password to log in."
B - Is the username found?
C - Search the username in the database.
D - Check the password.
E - Enter the username.

Want More WASSCE Past Questions
Get the complete or Updated WASSCE Past Questions Paper
(Objective and Essay) in PDF or Ms-Word from Us

WHATSAPP +2348051311885

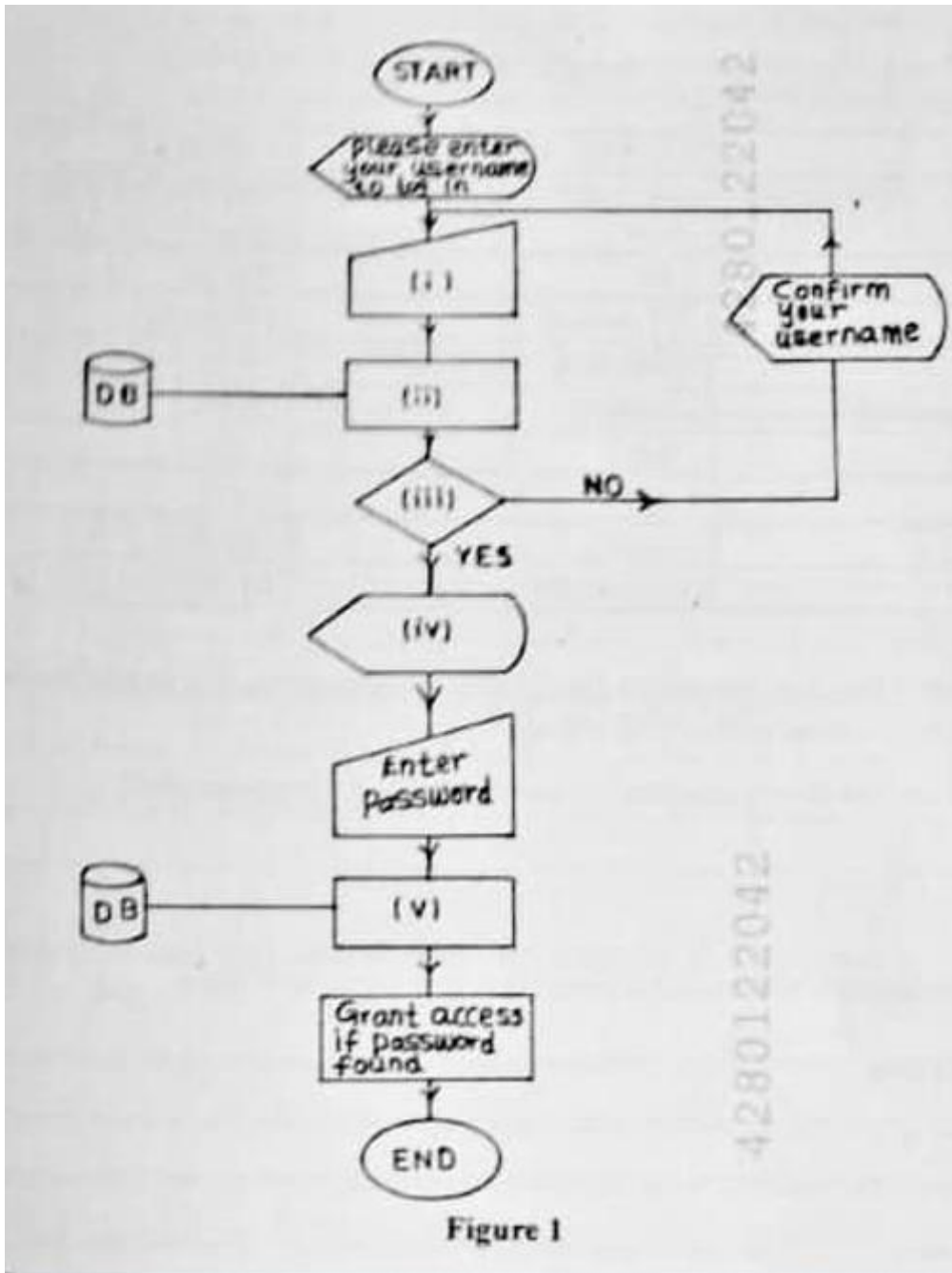


Figure 1

[5 marks]

- (i) _____
- (ii) _____
- (iii) _____
- (iv) _____
- (v) _____

2. **Table 1** shows the specification of **two** laptop computers. Use the table to answer questions **2(a)** to **2(c)**

Table 1

FEATURE	LAPTOP X	LAPTOP Y
Processor	2 GHz, 800 MHz, 1.8 MB cache	1.6 GHz, 700 MHz, 1.2 MB cache
Storage	1 TB	500 GB
Screen	15.5 inches	10.1 inches
OS	Windows 8	Windows 7
Wireless Capability	Disabled	Enabled
Battery Life	1 hour	4 hours
Weight	3 Kg	1.8 Kg
Bluetooth	Enabled	Disabled
Webcam	Not available	2.0 MB

A journalist makes long trips by train as part of official assignments. The journalist also needs to make live communication with editors

- (a) Which of the two laptop computers is **more suitable** for this journalist? [1 marks]
- (b) State **three** features of the chosen laptop in 2(a) that makes it better [3 marks]
- (c) Give **one** reason for choosing **each** of the features stated in 2(b) [6 marks]

3. A print configuration is not available in the region. The printer will be used in the region. The printer will be used in the region.
- (a) High resolution printing is required. The printer will be used in the region. [5 marks]
- (b) Outline the features of the printer that will be used in the region. [5 marks]

Want More WASSCE Past Questions
Get the complete or Updated WASSCE Past Questions Paper (Objective and Essay) in PDF or Ms-Word from Us

WHATSAPP +2348051311885

How to Get WASSCE/WAEC Comp Studies Obj/Essay Past Questions and Answers

To get the complete and more recent copy of the WASSCE Computer Studies Past Questions & Answers for Objective Test and Essay/Theory

Take Note of the following step.

1. TAKE ACTION

Whatsapp us on **+2348051311885** for account number to make payment and how to received your PDF Copy.

2. MODE OF PAYMENT.

Mobile Transfer, POS or Direct Bank Deposit.

3. AFTER PAYMENT.

Send us the following

Depositor Name:

Name of Product Paid for:

Valid email address.

4. DELIVERY ASSURANCE.

We will deliver the past question to you, 3 minutes after confirmation of payment to the email address you will send to us.

WHAT OTHERS ARE DOWNLOADING

[WAEC Past Questions](#)

[NECO Past Questions](#)

[Primary School Past Questions](#)

[Junior Secondary School Past Questions](#)

[Senior Secondary School Past Questions](#)

[Lesson Note](#)

[School of Nursing Past Questions and Answers](#)

WAEC SSCE Past Questions List of Subject Available for Download.

Cross Cutting Subjects WAEC Past Questions

[Civic Education](#)

[English Language](#)

General Mathematics

One Trade Subject

WAEC Science Past Questions

Agricultural Science

[Biology](#)

[Chemistry](#)

Computer Science

Further Mathematics

Health Education

Physical Education

[Physics](#)

Business WAEC Past Questions

Commerce

[Financial Accounting](#)

Insurance

Office Practice

Store Management

Technology WAEC Past Questions

Auto-Mechanics

Basic Electricity

Basic Electronics

Building Construction

Clothing and Textile

Foods and Nutrition

General Metal Work

Home Management

[Technical Drawing](#)

Wood Work

Data Processing

Dying and Bleaching

WAEC Humanities Past Questions

Arabic Language

Christian Religious Studies

[Economics](#)

French

[Geography](#)

[Government](#)

Hausa Language

History

Igbo Language

[Islamic Studies](#)

[Literature-in-English](#)

Music

[Visual Arts](#)

Yoruba Language

WAEC Trade Subjects Past Questions

Air Conditioning and Refrigeration

Animal Husbandry

Auto Body Repairs and Spray Painting

Auto Electrical Work

Auto Mechanical Work

AutoMobile Parts Mechandising

Block Laying, Brick Laying and Concreting Work

Book- Keeping

Carpentry and Joinery

Catering Craft Practice

Cosmetology

Data Processing

Dyeing and Bleaching

[Electrical Installation and Maintenance Works](#)

Fisheries

Furniture Making

Garment Making

GSM Phone Maintenance and Repair

Leather Goods Manufacturing and Repairs

Machine Woodworking

[Marketing](#)

Mining

Painting and Decorating

Photography

Plumbing and Pipe Fitting

Printing Craft Practice

Radio, Television and Electronic Works

Salesmanship

Stenography

Store Keeping

Tourism

Upholstery

Welding and Fabrication Engineering Craft Practice

OTHER SERVICES

- ❖ [Uploading of O'Level Result to Jamb Portal](#)
- ❖ **Printing of Jamb Original Result**
- ❖ **Reprinting of Jamb Change of Course/School Slip**
- ❖ **Result Checker Scratch Card - WAEC, NECO, BECE- NBAIS**
- ❖ [Post UTME Past Questions](#)
- ❖ [School of Nursing Past Questions](#)
- ❖ [WAEC/NECO SSCE Past Questions](#)

WHATSAPP +2348051311885